

Cedar River Log Homes
P.O. Box 340
Powers, MI 49874
Phone: (906) 497-5365

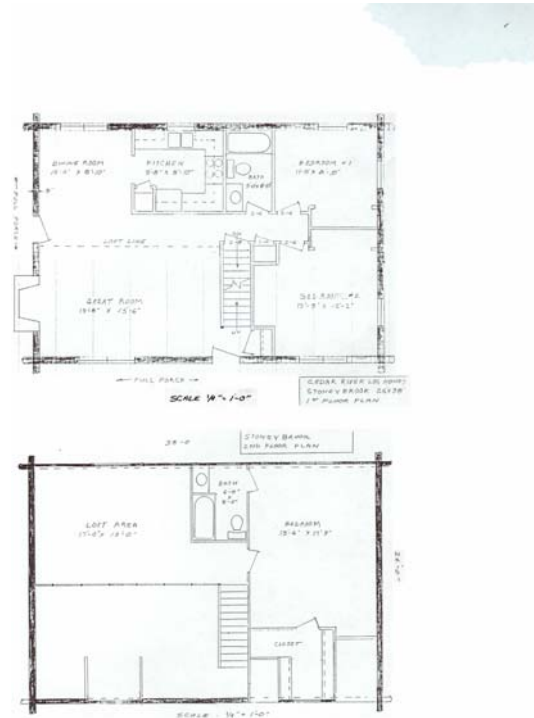


STONEBROOK



Stoney Brook
26 x 38

Floor Plan



Material List

- 2304 Lin. Ft. 6x6 D-Logs
- 2200 Lin. Ft. Foam Log Gasket
- 2200 Lin. Ft. 6" 1/4 Log Skirt
- 34 – 6" Log/ 1/4 Log Corners
- 1200 pieces 8" Log Screws
- 50# log spikes
- 3 – cases Log Builder Caulk
- 24 – 2 x 6 x 8' RS Cedar Trim Stock
- 126 lin. ft. 2 x 8 Treated Plates
- 306 lin. ft. 9 1/4" Rim Joist
- 1209 lin. ft. TJI Joist
- 40 lin. ft. 1 3/4" x 9 1/2" Beam
- 56 – 4 x 8 x 3/4" T&G OSB
- 240 – 2 x 4 x 8' SPF
- 36 – 2 x 4 x 16' SPF
- 24 – 2 x 4 x 12' SPF
- 3 – 2 x 12 x 16' DF Stair Stringers
- 5 – 2 x 10 x 10' SPF Stair Treads
- 120 – 2 x 6 x 8' SPF Studs
- 30 – 2 x 6 x 14' SPF Plates
- 20 – 2 x 6 x 12' SPF Gable Frame
- 6 – 2 x 10 x 8' SPF Headers
- 40 – 4 x 8 x 7/16" OSB
- Engineered Roof Truss System
- 80 – 4 x 8 x 1/2" OSB
- 16 – 2 x 6 x 16' SPF Subfacia
- 24 Sq. Roofing & Acc.
- 1000 bd. ft. 1 x 6 x 8' T&G Cedar Soffets
- 2 x 8 x RL Treated Porch Frame
- 5/4 x 6 Cedar Porch Deck
- 6 x 6 Cedar Post & Headers
- 96 lin. ft. Rails & Spindles
- Double Hung Windows & Doors

\$38,903.84