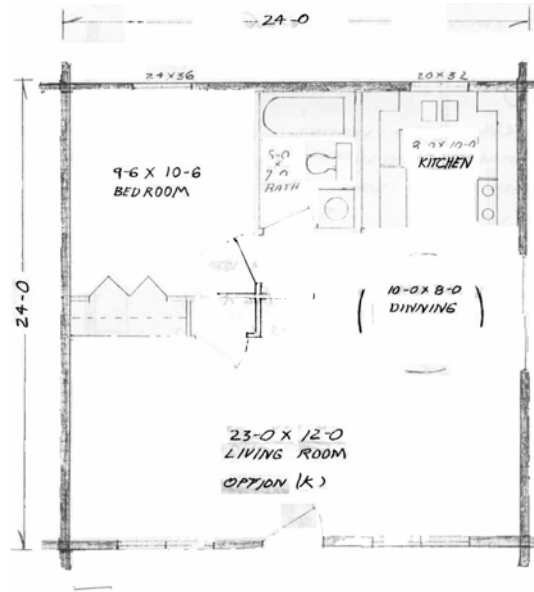


**Cedar River Log Homes**  
**P.O. Box 340**  
**Powers, MI 49874**  
**Phone: (906) 497-5365**



**24 X 24 Cabin**

**Floor Plan**



**Material List**

- 1632 Lin. Ft. 6x6 D-Logs
- 1600 Lin. Ft. Foam Log Gasket
- 888Lin. Ft. 6" ¼ Log Skirt
- 750 pieces 8" Log Screws
- 50# log spikes
- 11 – 24-0 x 6/12 – 4/12 Scissor Trusses
- 2 – 24-0 x 6/12 DG
- 36 – 4 x 8 x ½" OSB
- 11 sq. Roofing & Felt
- 60 – 2 x 4 x 8' SPF
- 36 – 2 x 4 x 12' SPF
- 10 – 2 x 6 x 16' SPF Subfacia
- 14 – 4 x 8 x 7/16" OSB
- 2 – 5050 SL Windows
- 1 – 4040 SL Window
- 1 – 6068 SL Patio Door
- 1 – 3068 Service Door

**Pricing:**

- Cedar ----- \$14,014.35
- Pine ----- \$11,433.15
- Spruce ----- \$11,136.75

**Options:**

- Porch Option ---- \$1,820.00
- Floor Option ---- \$1,216.85